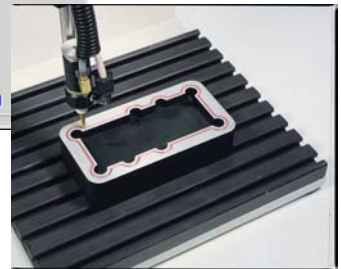
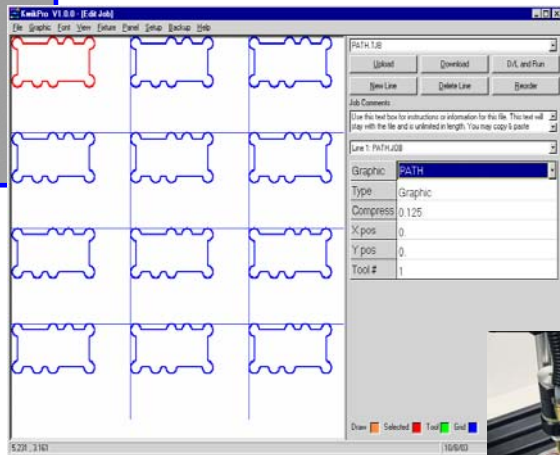
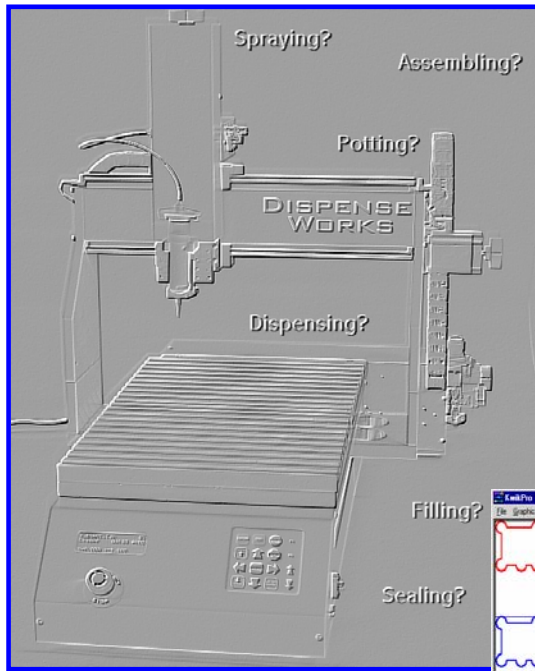


# Dispense Works

## RP-1215 DISPENSING ROBOT



# The Smart Way to Dispense

**Built-in Digital Valve Control**

## Simply The Best

The **Dispense Works** robot is designed for automatically dispensing a variety of materials including adhesives, pastes, grease, sealant, epoxies, etc. The system will streamline your production with big performance in a truly compact space saving desktop package. These units are becoming the operator's choice with a rich list of features that outdistance the competition.

## A Logical Design

The system features a movable gantry and cross slide which move and position the dispense head over your product. **This means your parts remain stationary.** Because your parts do not move, extremely fast machine cycles are possible without disrupting the dispensed fluid. Furthermore much simpler fixturing is required and your parts may be automatically indexed or conveyed into position. The Z axis features a universal mount and **quick connect** for any valve, syringe, or nozzle to suit virtually any application.

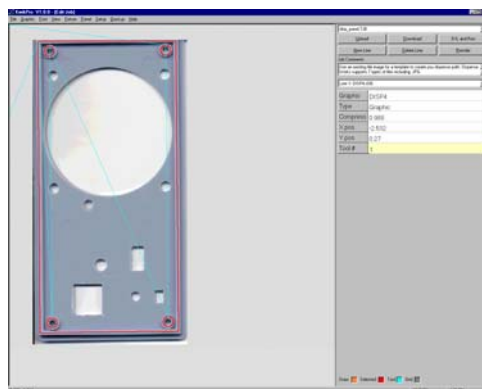


A generous 12" x 15" work area in a truly compact bench top package. No PC is required for operation or programming!

## The Most Features

### An Image as Your Template

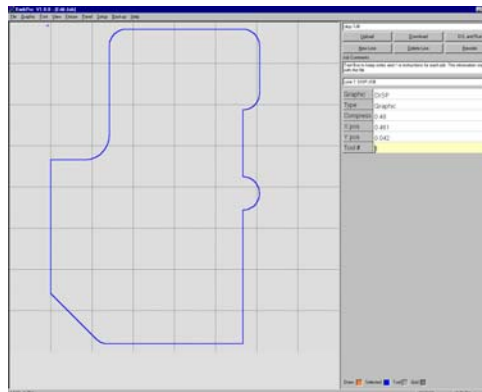
Import an image from several types of graphic files including .BMP & .JPG. Then use it as a template to layout the dispense path without any fussy setup or measuring required. The software has provisions to scale to a perfect numerical dimension regardless of the image source.



### Use Existing Cad Files

In addition to the on board Jog & Teach routines, The dispense path may be imported from standard formats such as .DXF .PLT or G-Code. The following assures exact tip speed regardless of the pattern geometry.

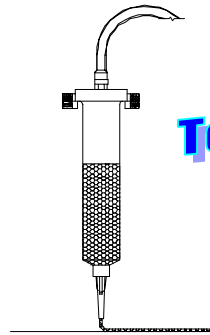
- \*Automatic motion optimization
- \*True vector velocity control
- \*Look ahead technology



# It Just Can't Be Any Simpler

## Advanced Performance

The rigid leadscrew drive construction and machine tool quality components provide the accuracy and repeatability required to satisfy any application. Several advanced motion algorithms such as vector velocity control and look-ahead motion technology will greatly outperform most other "generic" desktop robots. The included **Jog and Teach** system requires **NO** computer experience and is the most powerful and easiest to use in the industry.



**Tooling & Fixturing Available**

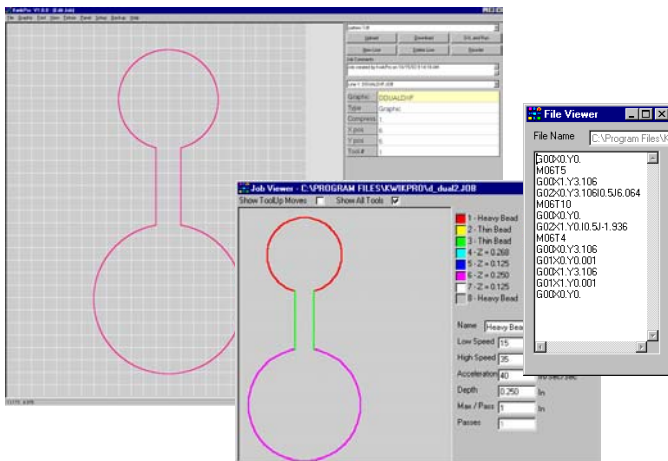
*With options: Vision system, vacuum plate, precision valve & pressure canister, 6" Z axis*



## The Operator's Choice

Just press the footpedal. The embedded real-time controller with dual memory can store thousands of dispensing paths limited only by the size of the included **Compact Flash Card**. Dozens of enhanced features are included along with complete on-board file management.

All this with an intuitive 16 key touchpad and bright 4 line LCD display which indicates cycle time, batch count, % of completion and dozens of other real time machine status updates to the operator at all times. A **convenient history function** displays the last 100 jobs run with cycle times, part counts, time/date, etc.

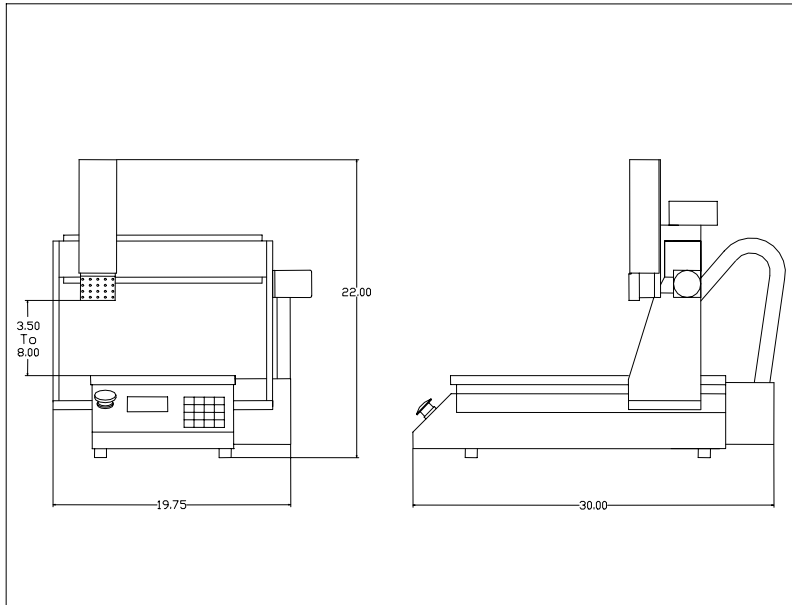


## Control Properties by Color

The optional Software Suite includes a full featured graphic viewer and editor. This means fast and simple creation and modification of the dispense path. Properties and events such as speed, tip height, valve timing etc. are settable for each color or layer.

In addition, all files stored on the machine and recorded with jog & teach may also be uploaded into our graphical **Windows Software Suite** for viewing, editing and storage.

# High Performance & Easy Operation



## **Perfect For:**

**Dispensing**

**Filling**

**Spraying**

**Potting**

**Sealing**

**Assembling**

**Positioning**

**Custom Applications**

## Software and Control Features and Specifications

### Control Specifications

- 16 key touchpad interface
- bright 4 line lcd display
- Compact Flash Card file storage
- embedded controls; No PC required
- one button homing and origin routines
- look ahead motion technology
- vector velocity control
- time touch sensitive jogging keys
- no pendants or handhelds required
- PS2 detachable keyboard (included)
- detachable footpedal option
- detailed 150 page operations manual
- dual speeds for cylindrical work
- constant surface speed on cylinders
- resetable origin with display

### Dispensing Features

- quick job setup
- jog & teach function
- converts 'taught' programs to G code
- sub routines
- digital valve control
- font filling ability
- global timer
- multi level dispensing
- dots
- dam & fill
- 12" x 15" x 3" XYZ work area
- optional 6" Z axis stroke
- pre tapped mounting on base & Z axis
- quick air and fluid line disconnects

### Enhanced Features

- coordinated motion control
- step & repeat (clone) function
- pause & resume
- last file recall
- user definable function keys
- outline routine defines work area
- file editing / deleting
- external I/O control
- pre-job / post-job commands
- real time job info display
- real time fixture info display
- rotary axis support & creation
- index axis support
- Z axis support
- coordinate translation

### Display Functions

- batch counter
- cycle timer
- percent of completion display
- x-y-z position readout
- history display
- files and fixtures in memory
- machine status display
- time & date
- on board diagnostics
- serial port communications
- advanced teaching commands
- back up capability
- distance from home & origin positions
- fault indication

### Windows Utility Functions

- visual job viewer
- Windows setup utility
- manual I/O control
- speed settings
- motion parameters
- time / date download
- rs-232 communications

### Optional Software Suite

- dynamic job editing and animation
- .DXF & .PLT & G code import function
- Reordering of path lines
- job comments text box
- supports optional vision system
- selectable toolpath view
- definable grid line display
- .DXF & .HPGL & G-code file viewer
- background image scan for layout
- imports 7 types of background files
- background image scale control
- background image positioning
- background image contrast control
- function key incrementing
- setup utility
- full color image control
- detailed history display
- cloning (step & repeat)
- one button backup
- visual layout of cylindrical objects
- visual layout of multi sided objects
- upload / download files

Dispense Works Inc

815 363 3524

dispenseworks.com